

10-11 Year Old Baseball Tournament Contacts and Site Plan – Haske

Emergency Contacts

In case of emergencies, dial **911**.

Non-Emergency Contacts

Police:	Purcellville Police Department 540-338-7700
Field Closures	Loudoun County Parks and Recreation 703-777-0456

Tournament Contacts

Host League	Upper Loudoun Little League President: Norris Beavers
Tournament Director:	Norris Beavers 540-687-5681 nbeavers@starpower.net
League Safety Officer:	Patty Eberhart 540-338-5466 (h) 703-606-5071 (c) chepen@comcast.net

Tournament Location

Haske Field
250 S. Nursery Ave.
Purcellville, VA 20132

From the east: Take Route 7 West. Exit at Berlin Turnpike/287 and turn left on to Berlin Turnpike. At the end of the road, turn right on to Main Street/Business 7. Turn left at the flashing yellow light at Nursery Avenue, and immediately bear right in front of the church. The field is on the left, one block down.

From the west: Take Route 7 East. Exit at Round Hill/Business 7 and turn. Continue on Route 7 into town, and make a right at the flashing yellow light at Nursery Avenue, and immediately bear right in front of the church. The field is on the left, one block down

Site Plan

The site has a large gravel parking lot adjacent to the field. The site is fairly flat and level, but all seating areas are covered with grass. There are no paved areas. There is a permanent concession stand, but no restroom facilities. The field has 2 sets of bleachers and additional space for seats. There is no field or parking lighting.



Concession Stand



Off-Street Parking

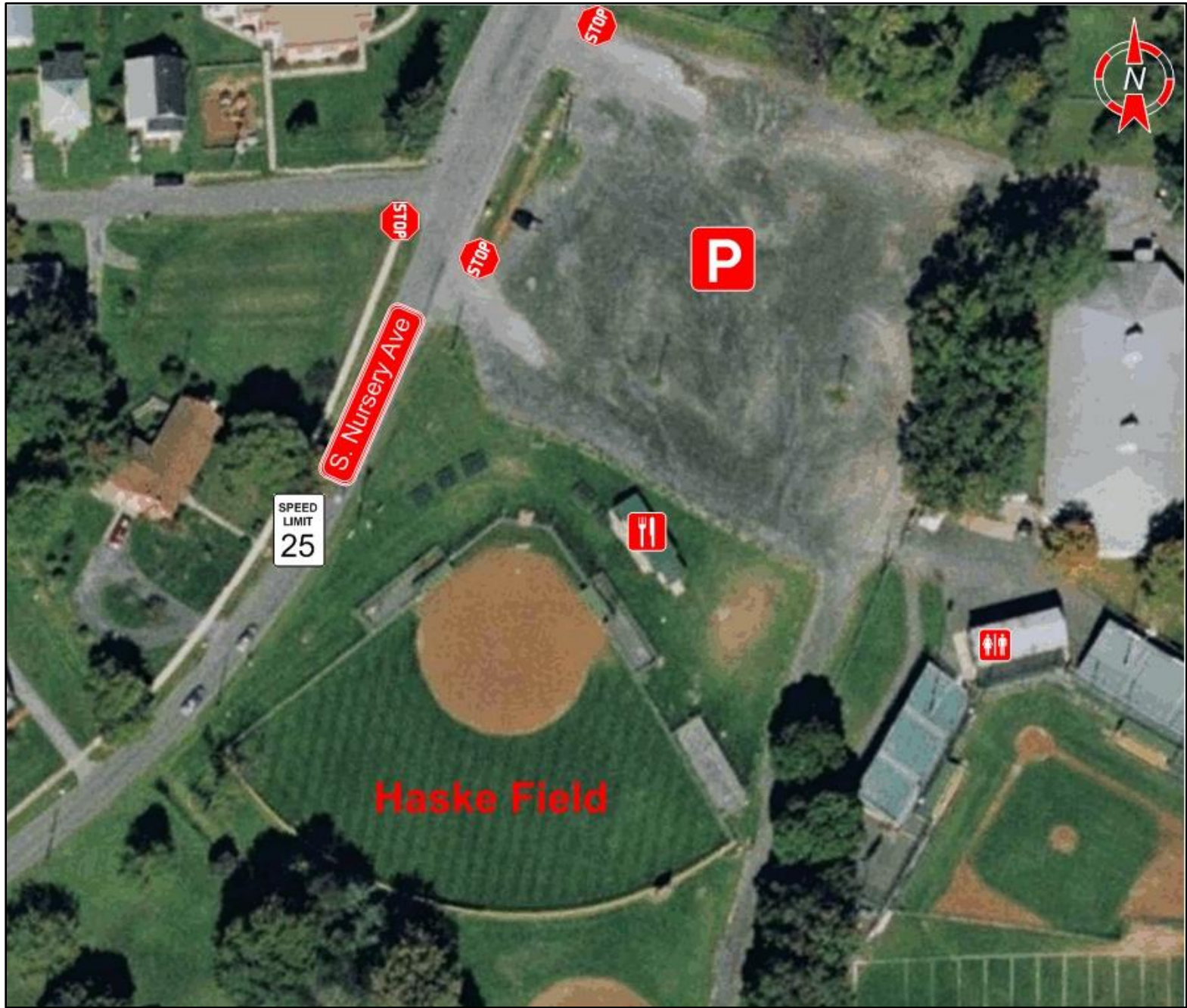


Figure 2 - Haske Field

10-11 Year Old Baseball Tournament Contacts and Site Plan – Round Hill

Emergency Contacts

In case of emergencies, dial **911**.

Non-Emergency Contacts

Police:	Loudoun County Sheriff's Department 703-777-1021
Field Closures	Loudoun County Parks and Recreation 703-777-0456

Tournament Contacts

Host League	Upper Loudoun Little League President: Norris Beavers
Tournament Director:	Don Tiaga 540-751-0714 roundhillrep@gmail.com
League Safety Officer:	Patty Eberhart 540-338-5466 (h) 703-606-5071 (c) chepen@comcast.net

Tournament Location

Round Hill Center Field
20 High St.
Round Hill, VA 20141

From the east: Take Route 7 into Round Hill, and exit at the Round Hill/Purcellville exit. Go right at the end of the off-ramp. Go into town of Round Hill, make a right at the Amoco Station onto Main Street. Make a left onto High Street. High Street will bear sharply right, leading directly into the parking lot. The field is on the left.

Site Plan

The site has limited paved parking available adjacent to the field. The site has limited areas that are handicap accessible, but a majority of the seating areas are not flat or level. There are bleachers and additional space for seats. The site has a concession stand, but no restroom facilities or field/parking lighting.



Concession Stand



Paved Off-Street Parking



Figure 3 - Round Hill Center Field